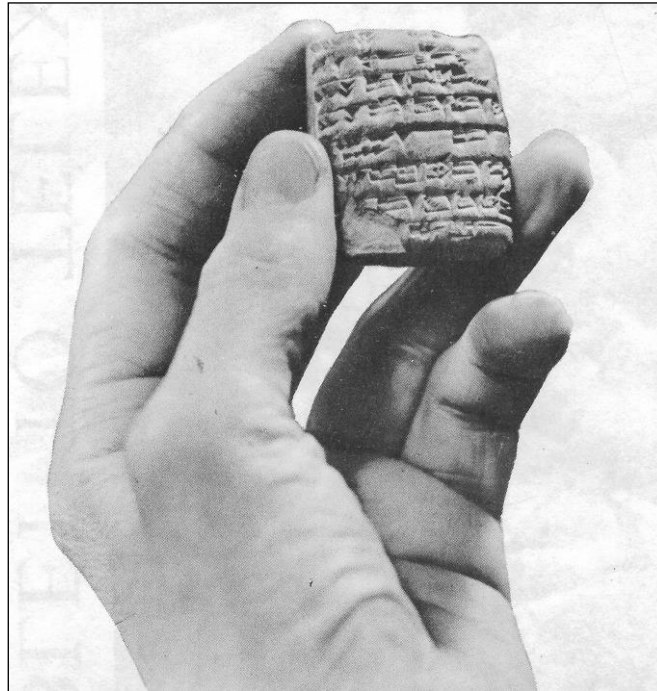


CLAY TABLET

We appear to have gone a full circle from 9000 B.C. to 2016 A.D.



This tiny clay tablet that came from Mesopotamia is believed to be over 3000 years old

Electronic tablets have, almost now superseded letters that since the invention of paper by the Chinese in 100 B.C., were traditionally written on paper until the present day.



Apple Tablets 2016 A.D.

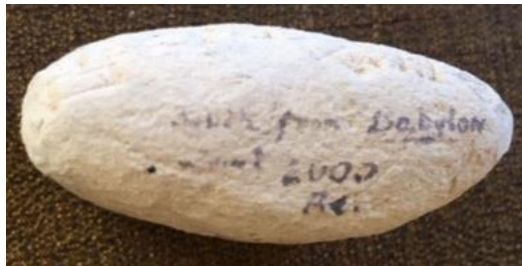
CUNEIFORM SCRIPT

The clay tablets were used as a writing medium, especially for writing in cuneiform, throughout the Bronze Age and well into the Iron Age.

Cuneiform is one of the earliest systems of writing, distinguished by its wedge-shaped marks on clay tablets, made by means of a blunt reed for a stylus. The name cuneiform itself simply means, "Wedge shaped".

Cuneiform characters were imprinted on a wet clay tablet with a stylus often made of reed (reed pen). Once written upon, many tablets were dried in the sun or air, remaining fragile. Later, these unfired clay tablets could be soaked in water and recycled into new clean tablets.

Other tablets, once written, were fired in hot kilns making them hard and durable. Collections of these clay documents made up the very first archives.



Inscription Bottom Edge



Clay Tablet in Author's collection

Provenance – Lot 237 Christie's-Robson Lowe Auction 24 November 1987.

Attributed to 2113 B.C., endorsed at one edge in ink:

“South from Babylon, about 2000 B.C.”

References “From Tablet to Telex” Department of Education Bulletin for Schools
Serial Number 34, issued 2 /1965. NZ Government Printer. Google – Wikipedia etc.